

100% SCHEMATIC DESIGN PACKAGE

FALLBROOK HIGH SCHOOL CTE

SCHOOL BOARD PRESENTATION
FEBRUARY 07, 2022 (Revised)



CYBER SECURITY

JROTC

DIGITAL MEDIA PRODUCTION

ENGINEERING & ROBOTICS

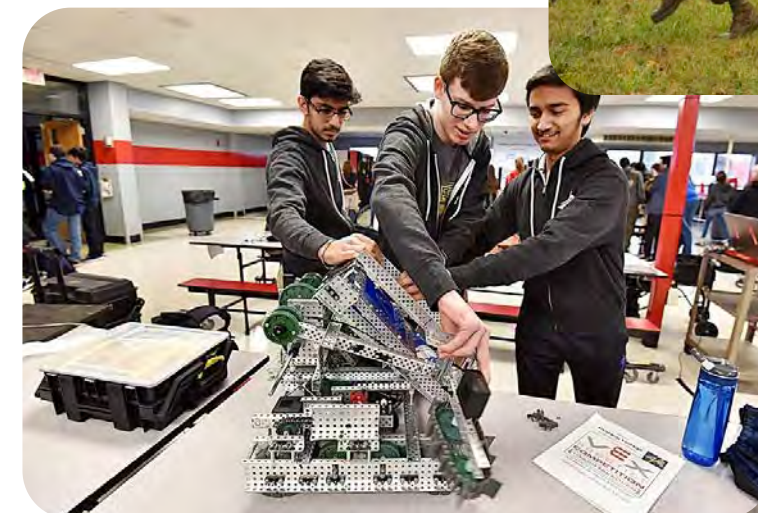
INNOVATION & PRODUCT DESIGN

TRANSPORTATION TECHNOLOGY

CTE PATHWAYS

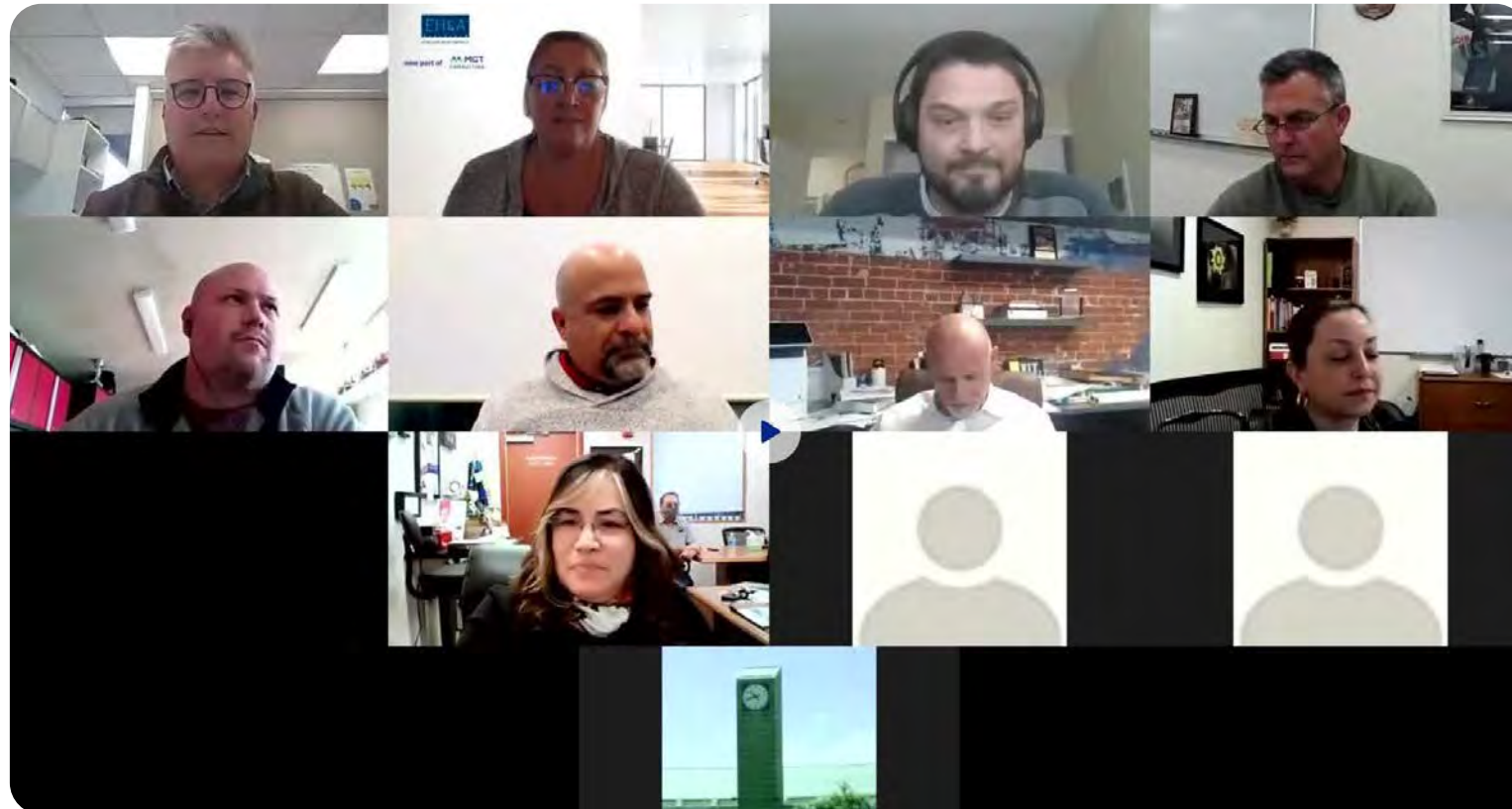
FALLBROOK HIGH SCHOOL - CTE

FALLBROOK UNION HIGH SCHOOL DISTRICT | RCA #1-31-01



SCHEMATIC DESIGN

January 24, 2022



HEAVY CTE INSTRUCTIONAL INPUT

PROGRAM OFFERED TODAY → WHAT IT WANTS TO BE IN NEW FACILITY

SPACE PROGRAM VALIDATION

COLLABORATION PROCESS

FALLBROOK HIGH SCHOOL - CTE

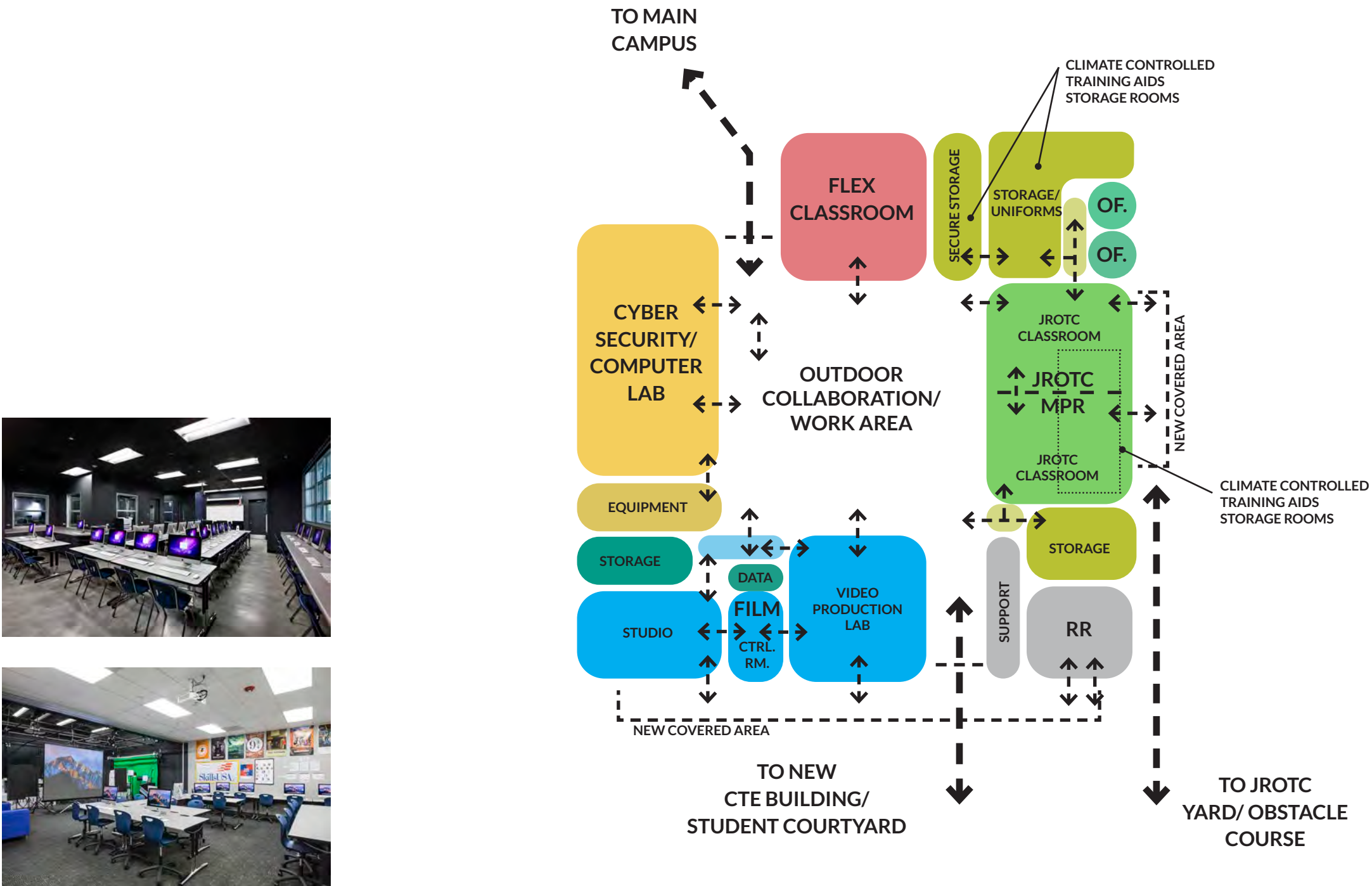
FALLBROOK UNION HIGH SCHOOL DISTRICT | RCA #1-31-01

SCHEMATIC DESIGN

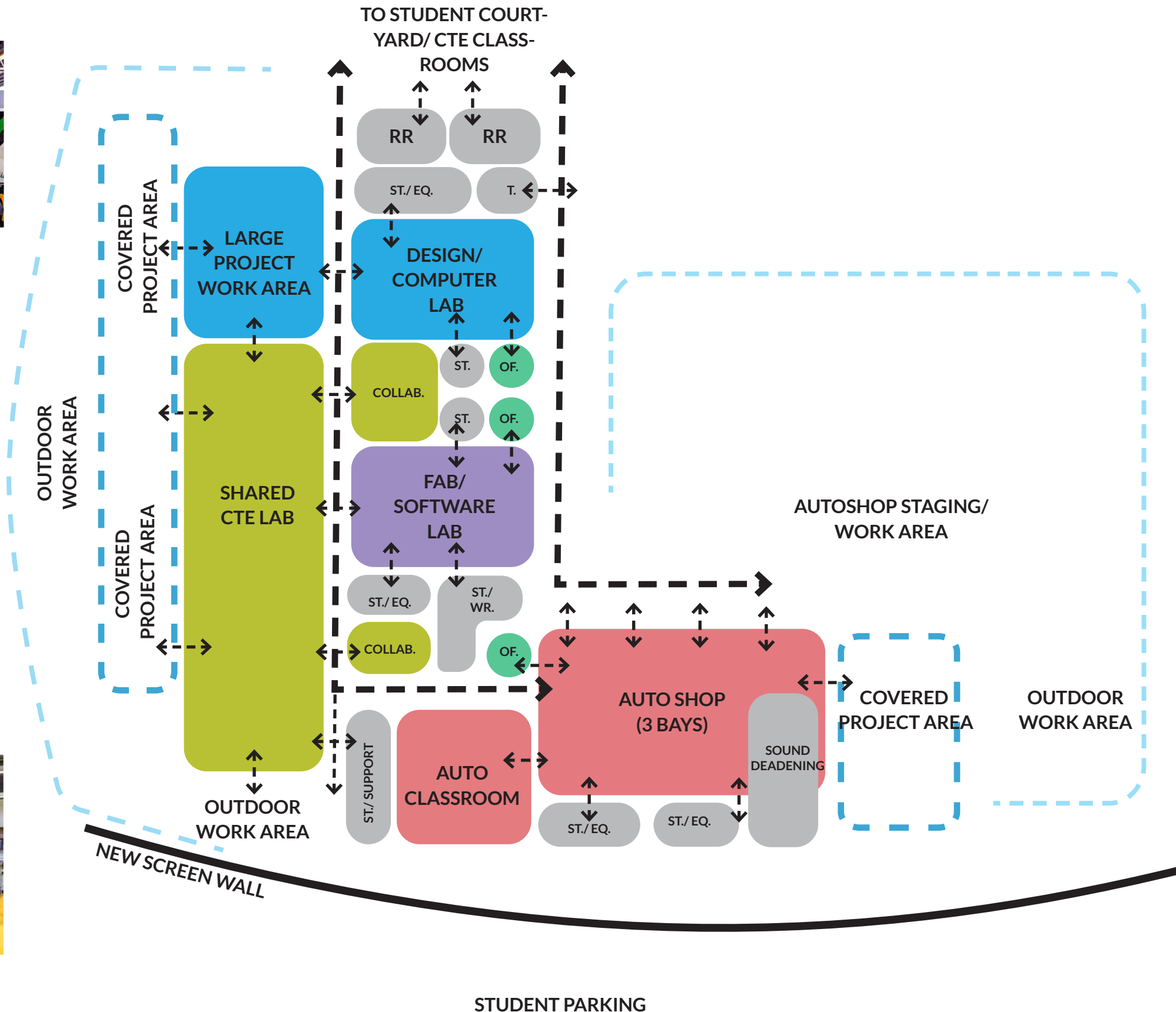
January 24, 2022

3

LEGEND	
JROTC	3,500 SF
CYBER SECURITY (ALT. CULINARY)	2,200 SF
FILM	2,550 SF
FLEX CLASSROOM	1,000 SF
RESTROOMS/ SUPPORT	750 SF
TOTAL:	10,000 SF



FLOOR PLAN DIAGRAM - BUILDING 400



LEGEND	
TRANSPORTATION	4,200 SF
ROBOTICS/ENGINEERING	1,400 SF
ADVANCED ENG./INNOV. DESIGN	3,000 SF
SHARED/ COLLAB.	3,400 SF
CIRCULATION	800 SF
UTILITY/SUPPORT	1,000 SF
TOTAL:	13,800 SF



FLOOR PLAN DIAGRAM - NEW CTE

FALLBROOK HIGH SCHOOL - CTE

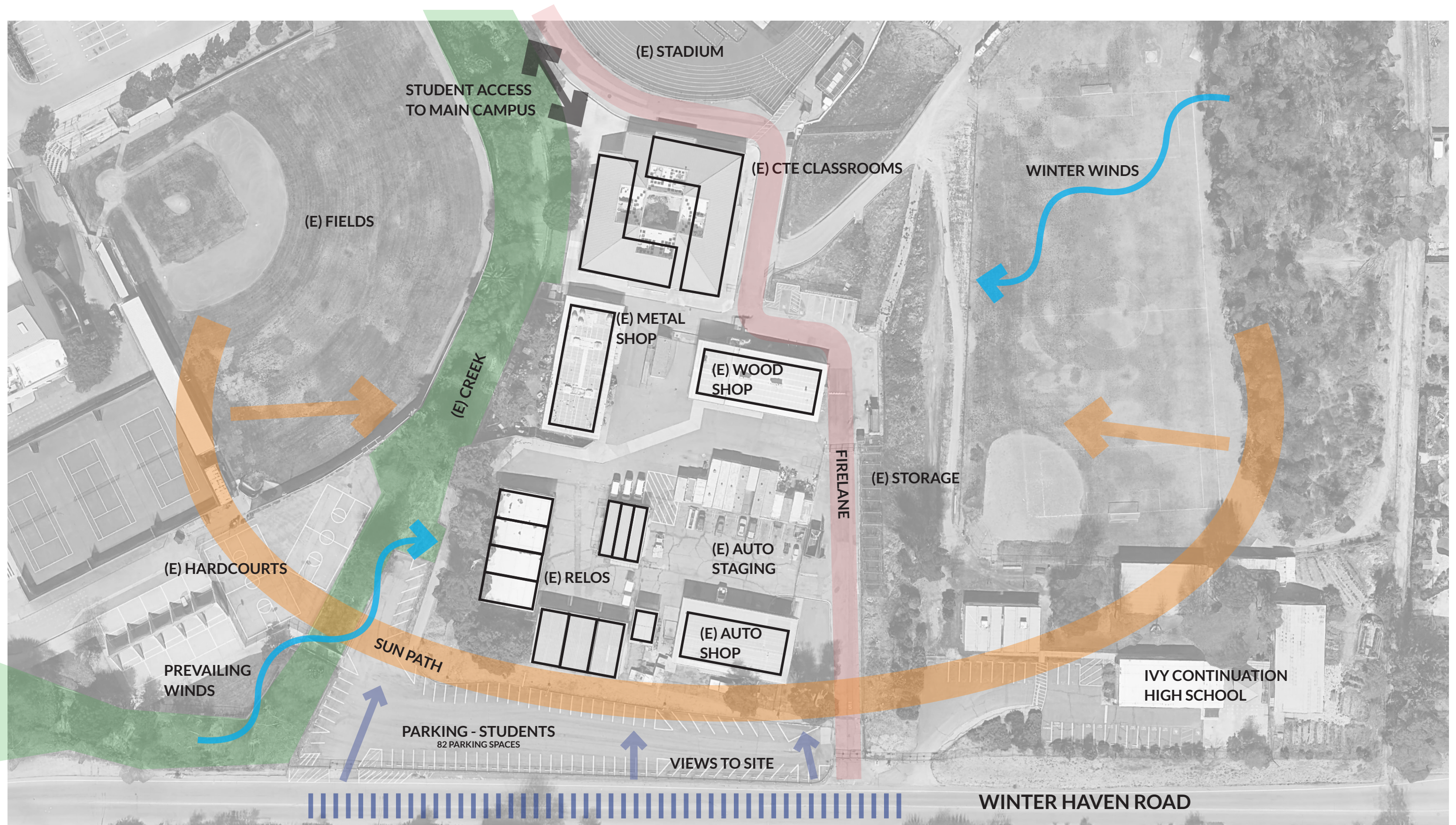
FALLBROOK UNION HIGH SCHOOL DISTRICT | RCA #1-31-01

SCHEMATIC DESIGN

January 24, 2022

5



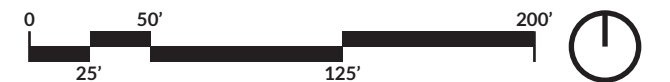


SITE ANALYSIS

FALLBROOK HIGH SCHOOL - CTE

FALLBROOK UNION HIGH SCHOOL DISTRICT | RCA #1-31-01

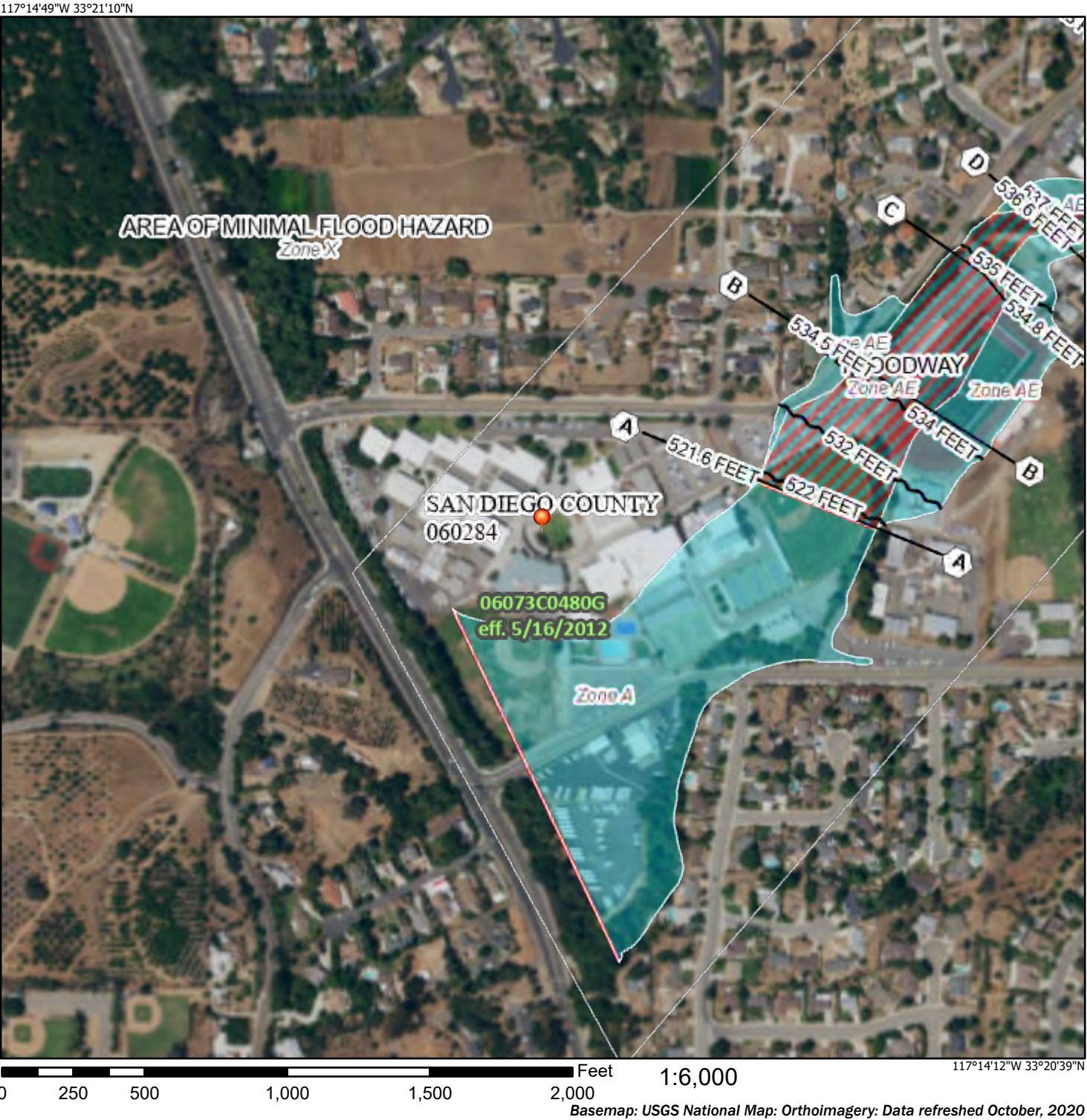
SCALE: 1" = 75'-0"



SCHEMATIC DESIGN

January 24, 2022

National Flood Hazard Layer FIRMette



Legend

SEE FIS REPORT FOR DETAILED LEGEND AND INDEX MAP FOR FIRM PANEL LAYOUT

SPECIAL FLOOD HAZARD AREAS		Without Base Flood Elevation (BFE) Zone A, V, A99
		With BFE or Depth Zone AE, AO, AH, VE, AR
		Regulatory Floodway

OTHER AREAS OF FLOOD HAZARD		0.2% Annual Chance Flood Hazard, Areas of 1% annual chance flood with average depth less than one foot or with drainage areas of less than one square mile Zone X
		Future Conditions 1% Annual Chance Flood Hazard Zone X
		Area with Reduced Flood Risk due to Levee. See Notes. Zone X
		Area with Flood Risk due to Levee Zone D

OTHER AREAS		NO SCREEN Area of Minimal Flood Hazard Zone X
		Effective LOMRs
		Area of Undetermined Flood Hazard Zone D

GENERAL STRUCTURES		Channel, Culvert, or Storm Sewer
		Levee, Dike, or Floodwall

OTHER FEATURES		Cross Sections with 1% Annual Chance Water Surface Elevation
		Coastal Transect
		Base Flood Elevation Line (BFE)
		Limit of Study
		Jurisdiction Boundary
		Coastal Transect Baseline
		Profile Baseline
		Hydrographic Feature

MAP PANELS		Digital Data Available
		No Digital Data Available
		Unmapped

The pin displayed on the map is an approximate point selected by the user and does not represent an authoritative property location.

This map complies with FEMA's standards for the use of digital flood maps if it is not void as described below. The basemap shown complies with FEMA's basemap accuracy standards

The flood hazard information is derived directly from the authoritative NFHL web services provided by FEMA. This map was exported on **8/23/2021 at 1:26 PM** and does not reflect changes or amendments subsequent to this date and time. The NFHL and effective information may change or become superseded by new data over time.

This map image is void if the one or more of the following map elements do not appear: basemap imagery, flood zone labels, legend, scale bar, map creation date, community identifiers, FIRM panel number, and FIRM effective date. Map images for unmapped and unmodernized areas cannot be used for regulatory purposes.

FLOOD PLANE

FALLBROOK HIGH SCHOOL - CTE

FALLBROOK UNION HIGH SCHOOL DISTRICT | RCA #1-31-01

SCHEMATIC DESIGN

January 24, 2022

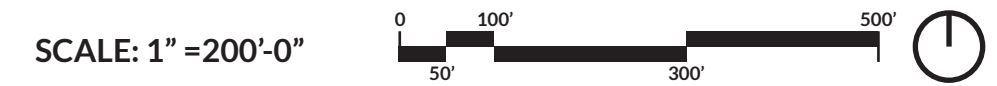


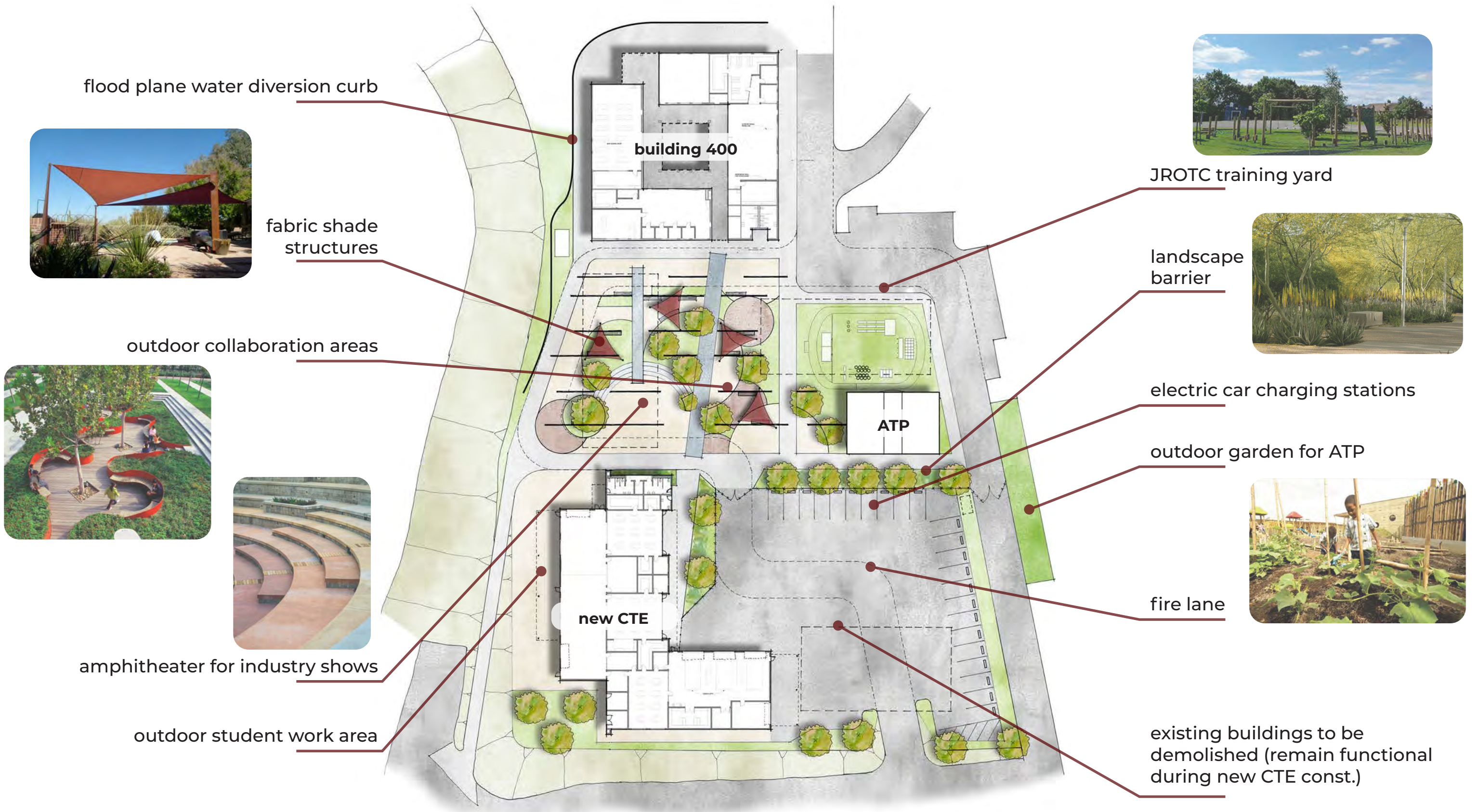
- PHASE ONE:**
- Modernization of Building 400
 - Replace of Modular Classrooms (6 CR)
 - Light Modernization of 10 Existing Modular Buildings
 - Replace HVAC
 - New Ceiling
 - New Carpet & Base
 - New Technology & AR System
 - Replace Tack Boards
 - Paint Exterior and Interior

- PHASE TWO:**
- New CTE Building
 - Demo (E) Shop Buildings
 - New ATP Modular Classroom w/ RR
 - Refurbishment of (E) ATP Garden
 - New Student Courtyard
 - New JROTC Yard and Obstacle Course

OVERALL SITE PLAN

FALLBROOK HIGH SCHOOL - CTE
 FALLBROOK UNION HIGH SCHOOL DISTRICT | RCA #1-31-01



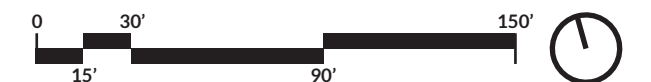


ENLARGED SITE PLAN

FALLBROOK HIGH SCHOOL - CTE

FALLBROOK UNION HIGH SCHOOL DISTRICT | RCA #1-31-01

SCALE: 1" = 60'-0"



SCHEMATIC DESIGN

January 24, 2022

concept imagery



material palette



landscape



exterior lighting



EXTERIOR CONCEPT BOARD

auto shop & collab rooms: bold flooring and wall graphics



project area & design labs



furniture



INTERIOR CONCEPT BOARD

LVT

Patcraft
Mixed Materials
Converge-Wood
Planx Facet
Sand Oak 00140
12 X 24



Carpet

Patcraft
Mixed Materials Converge
Cube & Colour-Facet
Cherry
17 X 24



Carpet

Patcraft
Cube & Colour-Facet
Star Anise
17 X 24



LVT

Patcraft
Creative Code
Download
12 X 24



Resinous Flooring

Tnemec
Custom Colors



Natural Sealed
Concrete



Tile

DalTile
Ironcraft
Charcoal Grey IC13
12 x 24



RENDERED FLOOR PLAN - BUILDING 400

SCALE: 1/16" = 1'-0"



FALLBROOK HIGH SCHOOL - CTE

FALLBROOK UNION HIGH SCHOOL DISTRICT | RCA #1-31-01

SCHEMATIC DESIGN

January 24, 2022

12





east elevation



north elevation

EXTERIOR ELEVATIONS - BUILDING 400

FALLBROOK HIGH SCHOOL - CTE

FALLBROOK UNION HIGH SCHOOL DISTRICT | RCA #1-31-01

SCALE: 1/16" = 1'-0"



SCHEMATIC DESIGN

January 24, 2022

13



south elevation



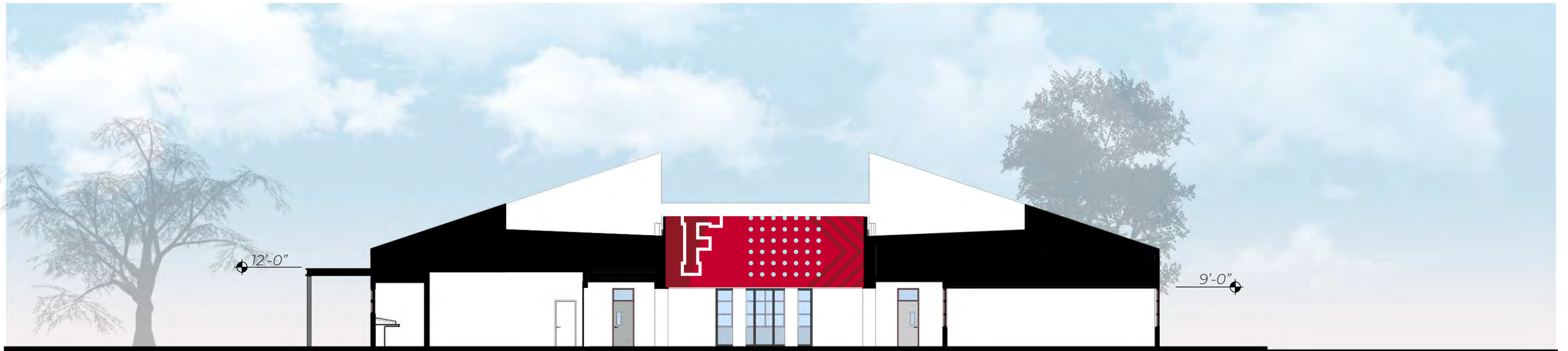
west elevation

EXTERIOR ELEVATIONS - BUILDING 400

FALLBROOK HIGH SCHOOL - CTE
 FALLBROOK UNION HIGH SCHOOL DISTRICT | RCA #1-31-01

SCALE: 1/16" = 1'-0" 0 8' 40' 4' 24'

SCHEMATIC DESIGN
 January 24, 2022



BUILDING SECTIONS - BUILDING 400

FALLBROOK HIGH SCHOOL - CTE

FALLBROOK UNION HIGH SCHOOL DISTRICT | RCA #1-31-01

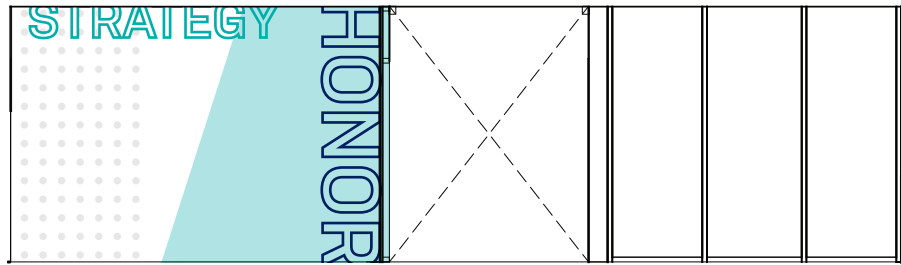
SCALE: 1/16" = 1'-0"



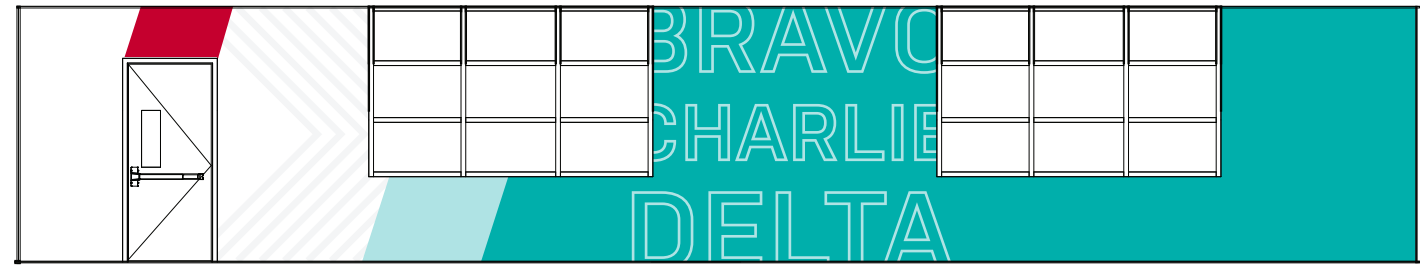
SCHEMATIC DESIGN

January 24, 2022

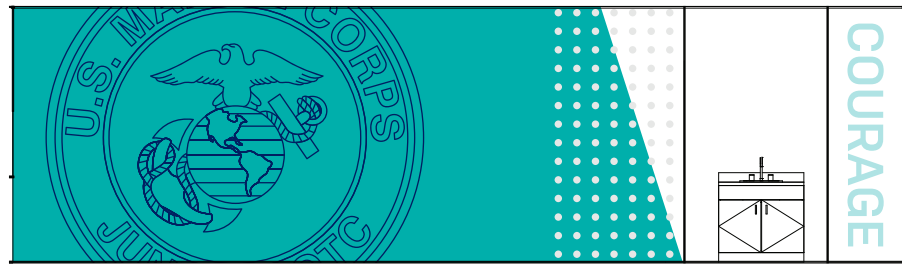
15



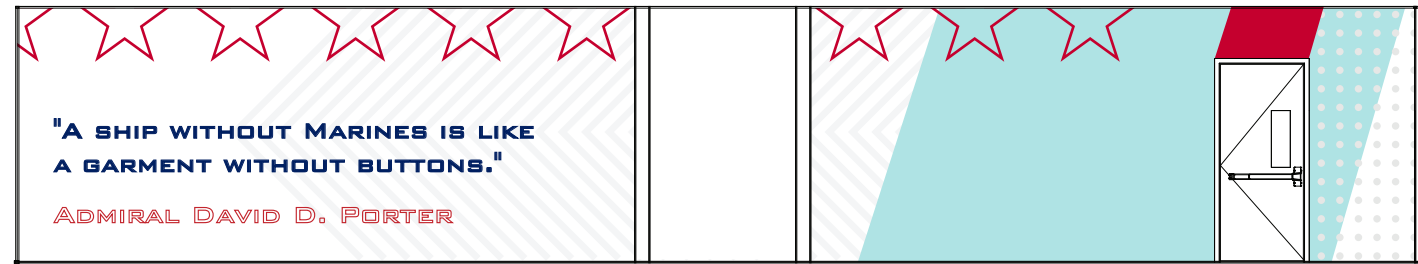
elev 1



elev 2



elev 3



elev 4

JROTC classroom/ mpr

INTERIOR ELEVATIONS - BUILDING 400

FALLBROOK HIGH SCHOOL - CTE

FALLBROOK UNION HIGH SCHOOL DISTRICT | RCA #1-31-01

SCALE: 1/16" = 1'-0"



SCHEMATIC DESIGN

January 24, 2022



building 400 exterior

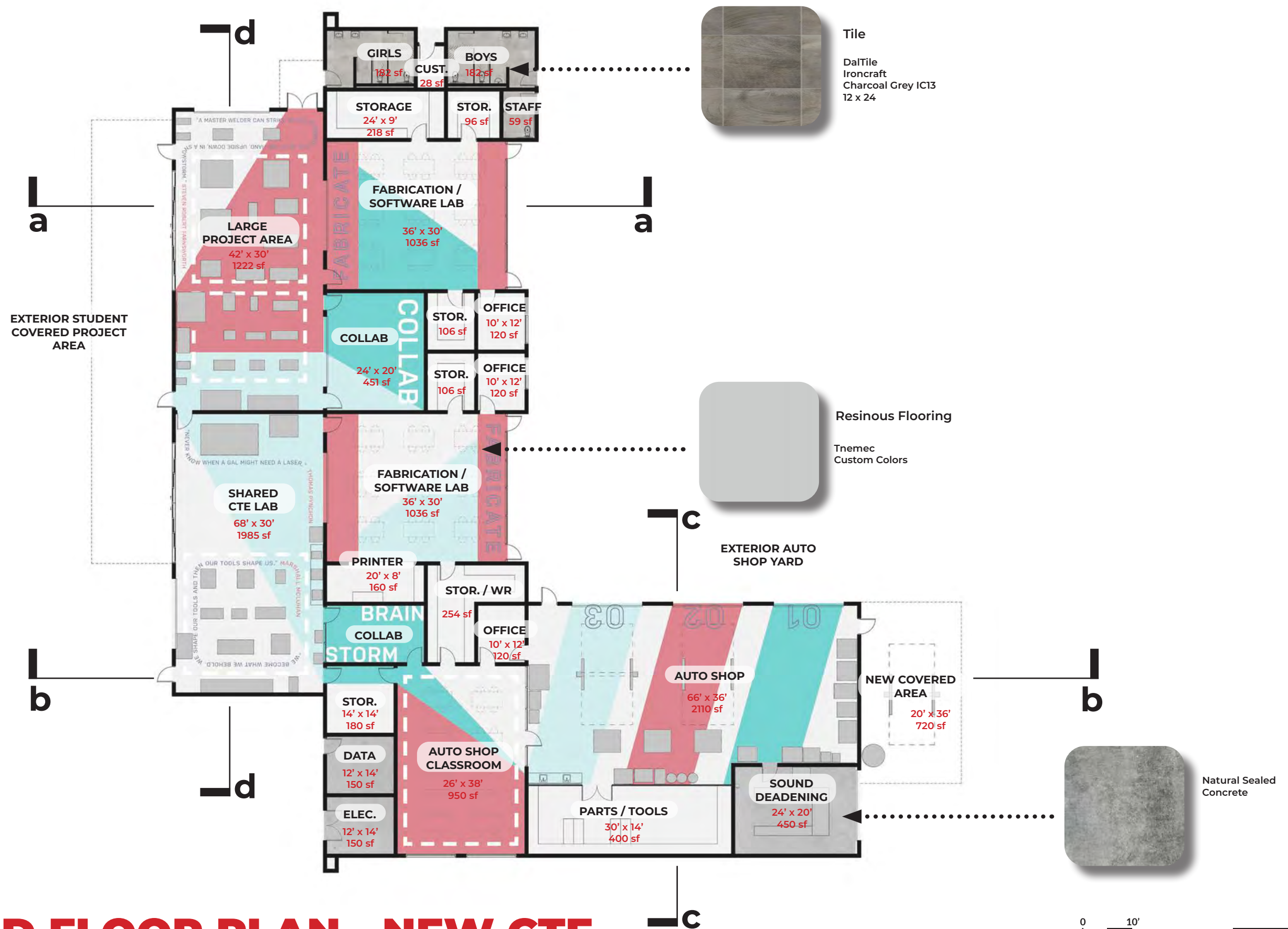


outdoor amphitheater



building 400 exterior

EXTERIOR RENDERINGS - BUILDING 400



RENDERED FLOOR PLAN - NEW CTE

FALLBROOK HIGH SCHOOL - CTE

FALLBROOK UNION HIGH SCHOOL DISTRICT | RCA #1-31-01

SCHEMATIC DESIGN

January 24, 2022



east elevation



west elevation

EXTERIOR ELEVATIONS - NEW CTE

FALLBROOK HIGH SCHOOL - CTE

FALLBROOK UNION HIGH SCHOOL DISTRICT | RCA #1-31-01

SCALE: 1/16" = 1'-0"



SCHEMATIC DESIGN

January 24, 2022

19



north elevation



south elevation

EXTERIOR ELEVATIONS - NEW CTE

FALLBROOK HIGH SCHOOL - CTE

FALLBROOK UNION HIGH SCHOOL DISTRICT | RCA #1-31-01

SCALE: 1/16" = 1'-0"



SCHEMATIC DESIGN

January 24, 2022

20





section a



section b

BUILDING SECTIONS - NEW CTE

FALLBROOK HIGH SCHOOL - CTE

FALLBROOK UNION HIGH SCHOOL DISTRICT | RCA #1-31-01

SCALE: 1/16" = 1'-0"



SCHEMATIC DESIGN

January 24, 2022



section c



section d

BUILDING SECTIONS - NEW CTE

FALLBROOK HIGH SCHOOL - CTE

FALLBROOK UNION HIGH SCHOOL DISTRICT | RCA #1-31-01

SCALE: 1/16" = 1'-0"

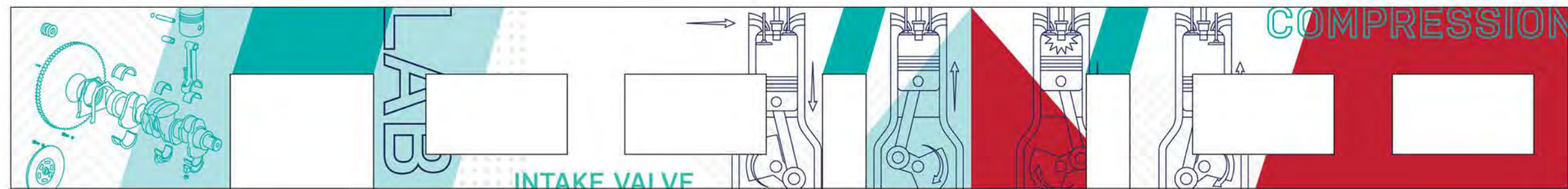


SCHEMATIC DESIGN

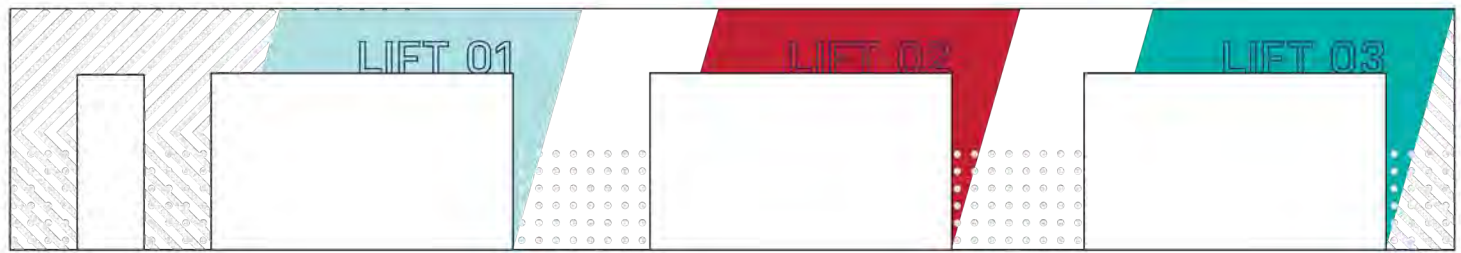
January 24, 2022

22

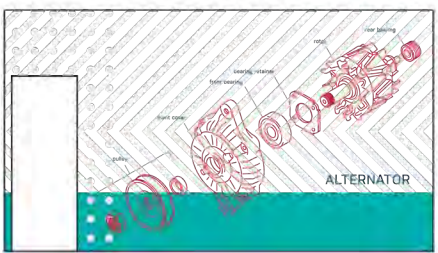
RUHNAU
CLARKE
ARCHITECTS



shared cte lab



auto shop



collaboration

INTERIOR ELEVATIONS - NEW CTE



autoshop yard



outdoor student work area



new CTE aerial

EXTERIOR RENDERINGS - NEW CTE

FALLBROOK HIGH SCHOOL - CTE

FALLBROOK UNION HIGH SCHOOL DISTRICT | RCA #1-31-01

SCHEMATIC DESIGN

January 24, 2022

24

RUHNAU
CLARKE
ARCHITECTS



outdoor connection / collaboration areas



CTE classrooms



view from street

EXTERIOR RENDERINGS - NEW CTE

PHASE ONE:

New modular classrooms; modernization of existing modular classrooms and Building 400

- Demolition: \$180,000
- Site & Utilities: \$425,000
- New Modular Classroom Buildings: \$972,00
- Siesmic Upgrades to Building 400: \$693,000
- Modernization of Building 400: \$2,630,000
- Phase One Sub-total: \$4,900,000

PHASE TWO:

New CTE Building

- Demolition: \$425,000
- Site & Utilities: \$1,870,000
- New ATP Modular CR Buildings: \$960,000
- New CTE Building \$7,965,000
- Phase Two Sub-total: \$11,220,000

Total Schematic Design Construction Cost Estimate: \$16,120,000*

Project Soft Costs \$4,836,000
(A/E fees, project management fees, inspector of record, testing, DSA fees, FF&E, etc.)

Total Project Cost Estimate Estimate: \$20,956, 000

* - Conceptual estimate includes bonds & insurance; general contractor general conditions and requirements; fee; a design contingency and escalation.



BUDGET

FALLBROOK HIGH SCHOOL - CTE

FALLBROOK UNION HIGH SCHOOL DISTRICT | RCA #1-31-01

SCHEMATIC DESIGN

January 24, 2022

SCHEDULE:

- Design Phase (Schematic Design through Construction Documents):
April 2021 – April 15, 2022
- Agency Approval Phase:
April 15, 2022 – July 31, 2022
- Bidding Phase:
TBD
- Construction Phase:
TBD
- Project Closeout:
TBD



SCHEDULES

NEXT STEPS:

- Board Presentation of CTE project:
January 24, 2022
- Board approval of CTE Scope and Budget (Note: this was never done which is why we are stalled at the moment):
February 7, 2022
- Solicited proposals for Modular Classrooms:
January 24, 2022 - February 11, 2022
- Present and Request Board approval of Modular Mfg Piggy Back:
February 28, 2022
- Submit project to DSA:
April 15, 2022



NEXT STEPS

FALLBROOK HIGH SCHOOL - CTE

FALLBROOK UNION HIGH SCHOOL DISTRICT | RCA #1-31-01

SCHEMATIC DESIGN

January 24, 2022

28

An architectural rendering of a modern school building, likely a Career Technical Education (CTE) center, set against a sunset sky. The building is a single-story structure with a flat roof, featuring a mix of light gray and red brickwork. It has several windows and a large entrance area. In the foreground, there's a paved parking lot with several cars parked. To the right, there are large, mature trees. The overall scene is peaceful, with the sun low on the horizon to the left, casting a warm glow over the entire scene.

QUESTIONS? COMMENTS?

***WE ARE GRATEFUL FOR THIS
OPPORTUNITY!!***

RUHNAU
CLARKE
ARCHITECTS