



## **SYRACUSE ARTS ACADEMY**

### **HWY 193 CAMPUS**

357 S. 1550 W.  
Syracuse, UT 84075

[ONLINE SNAP PLAN](#)

## **STUDENT NEIGHBORHOOD ACCESS PROGRAM**

The Highway 193 Campus of Syracuse Arts Academy is located at 357 W. 1550 W. in Syracuse. The campus will serve approximately 700 students in grades K-6.

Most students will arrive and depart in carpools or guardian vehicles. Patrons are asked to follow the schools designated Drop Off and Pick Up procedures to ensure student safety and the efficiency of traffic flow through the area.

*The Highway 193 Campus will open fall 2015. Based on construction, it is the schools understanding that a new road will be completed to form 1550 W. to 1525 W. from Highway 193 down to 700 S. with sidewalks and traffic controls in place.*

### **Traffic Controls**

There are various stop, yield, and traffic signals throughout the neighboring subdivisions and access routes. Parents who choose to allow their students to walk or bike to and from school will assume responsibility for all risks involved. Travelers should obey all traffic lights, laws, signs, and signals and cross carefully and legally to enter and exit school grounds.

Traffic lights exist at on Highway 193 at 1000 W. and 2000 W. There is also a traffic light located at 2000 W. and 700 S.

*The school requests a light be added to create an intersection at Highway 193 and 1550 W. This intersection should have crosswalks included and all allowances for pedestrian traffic, such as flags.*

### **Hazards and Sidewalks**

Parents and students who decide to walk or bike to and from school should follow the safest routes possible using sidewalks or crosswalks to reach nearby residential neighborhoods. Parents who choose to allow their students to walk or bike to school are encouraged to travel these routes with their children to determine the safest route possible.

*The school would recommend sidewalk improvements on the south side of Highway 193 west of the school to connect to the sidewalk along 2000 W. and east of the school to approximately 1000 W.*

## **School Crosswalk**

Currently, there are crosswalks located at the intersection of 2000 W. and 200 S. and 2000 W. and 700 S. There are traffic lights at these intersections to direct traffic flow.

Be aware that sidewalks and crossing guards are not fully in place. Caution should be used when walking along the shoulder of the road.

*The following crosswalk improvements are proposed:*

- *A school crossing zone at a new intersection at 1550 W. and Highway 193. This crossing will be used as the primary means of pedestrian and bicycle traffic for crossing Highway 193 and accessing the school.*
- *A crossing guard be provided to help students cross Highway 193.*
- *Should student pedestrian and bike traffic warrant, a new crosswalk may be beneficial across 700 S. at 1525 W.*

Until construction is complete and the desired controls are in place, students should use the existing crosswalks.

## **Walking and Biking Routes**

Students riding their bicycles should stay on the extreme far right of the road, when necessary, allowing vehicle traffic the right of way as much as possible. Where available, students should ride on sidewalks as much as possible.

Below are the current walking and biking routes:

North:

When leaving the school, students living north of Highway 193 should walk north on 1550 W. to Highway 193. Students should then proceed west on Highway 193 using the shoulder and sidewalks to the light intersection then cross north and through the sound barrier to the trail that runs along 200 S. Students should then travel using the paved trail until they reach the road running north to their desired residential street.

South:

When leaving the school, students should travel south along 1550 W. to 1525 W. and if they live in the new housing take the road to their street. Once the student reaches 700 S. they should walk west and cross south at the light intersection at 2000 W. Students should then proceed east on 700 S. along the south side to their residential street

where they will travel south.

#### **East and West:**

The area east of the school is mainly businesses and there aren't adequate sidewalks for students to travel. The area west of the school is composed of farmland, but those living within walking distance should travel from the school south on 1550 W. and cross using the crosswalk on 1550 W. or proceed west on 700 S. near Syracuse High School and cross using the crosswalks. Then the students should proceed west on 700 S. to their residential road and go south or should go south on 2000 W. to their residential road and go west.

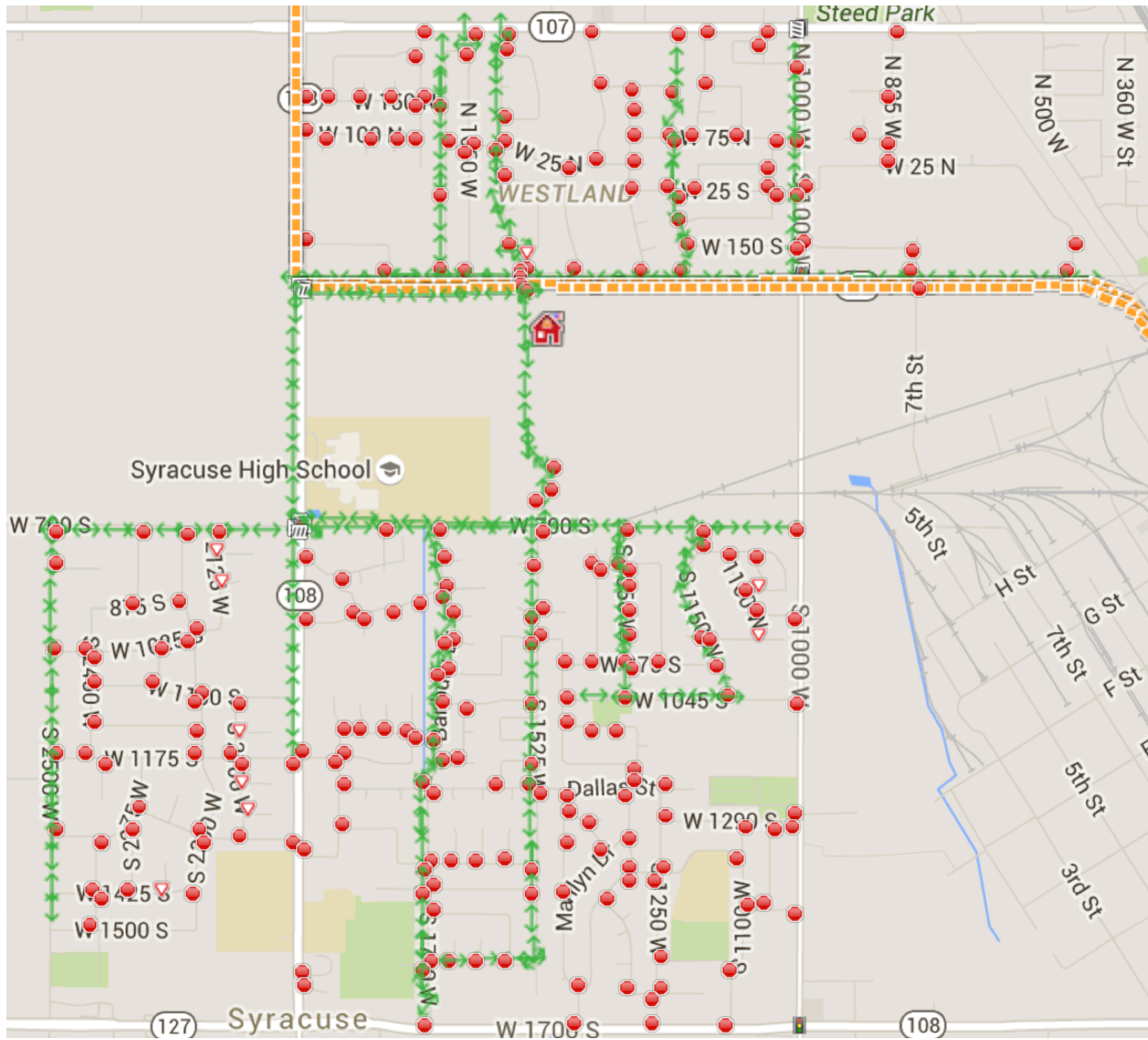
#### **Overview**

It is estimated an average of 5-15% of students will walk or bike to and from school. Students that walk or bike are encouraged to follow the below maps outlined safe walking routes and always use the sidewalk.

Minus the traveling routes outlined above, the school advises against students walking or biking to and from school, especially during heavy traffic time periods on the roadway.

Note that the speed limit along Highway 193 is 50 mph around the school and the area is not a designated School Zone. Highway 193 is a high-speed, high-volume roadway where extra caution should be used.

These routes are for the immediate area around the Highway 193 Campus of Syracuse Arts Academy and are not exhaustive. Please contact the school for additional information regarding safe traveling routes.



### ROUTE KEY

Damaged/No Sidewalk	Safest Walking Route
---------------------	----------------------

### Icon Key

School	Crosswalk-Horizontal
Crosswalk-Vertical	Traffic Signal
Stop Sign	Yield Sign